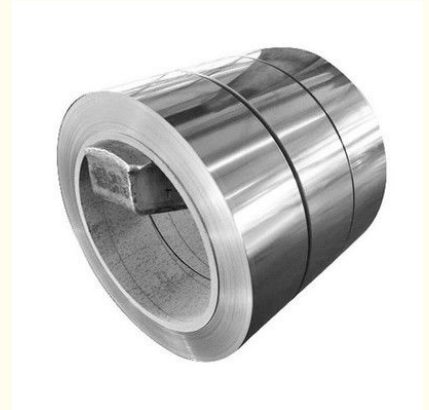


Custom 1/16" 1/2" 430 Stainless Steel Coil Strip 310 316 304 410

Our Product Introduction

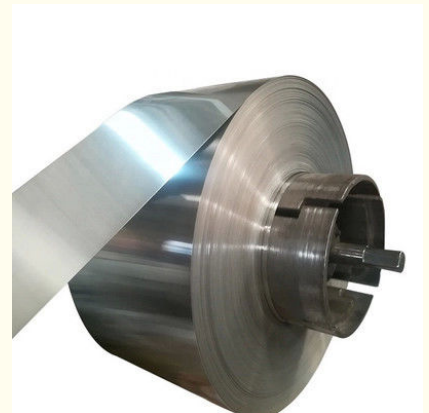
Basic Information

- Place of Origin: china
- Brand Name: jinshunlai
- Certification: ISO, AISI, ASTM, GB, EN, DIN
- Model Number: 0.1mm-900mm
- Minimum Order Quantity: 1kg
- Price: Contact Us
- Packaging Details: Waterproof Paper, Steel Strip Packed and other Standard Export Seaworthy Package, or customized package
- Delivery Time: 5day
- Payment Terms: T/T
- Supply Ability: 90000ton



Product Specification

- Certificate: ISO, SGS, BV
- Edge: Slit Edge/Mill Edge
- Grade: 200/300/400/900 Series
- Material: Stainless Steel
- Thickness: 0.1mm-50mm
- Width: 1000mm-2000mm
- Highlight: Custom 430 stainless steel coil, 430 stainless steel coil Strip, Custom stainless steel 304 coil



for more products please visit us on copper-solid.com

Product Description

PRODUCT DESCRIPTION

410 430 Cold Rolled Stainless Steel Strip for Washing Machine Inner Bucket

430 stainless steel is a general steel with good corrosion resistance. Its thermal conductivity is better than austenite, its thermal expansion coefficient is smaller than austenite, its heat resistance fatigue, and the addition of stabilized element titanium has good mechanical properties at the welding seam.

430 stainless steel for building decoration, fuel burner parts, household appliances, home appliances parts.

Product Description

Stainless steel does not stain, corrode, or rust as easily as regular carbon steel and provides high strength and impact resistance along with the aesthetic appeal. The material also has anti-bacterial qualities and is easy to clean and sanitize.

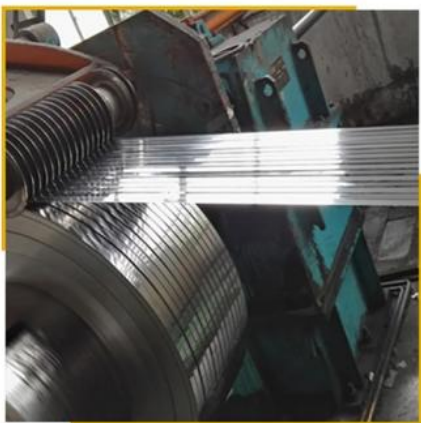
Stainless steel sheet and **stainless steel plate** are both a perfect solution for applications that require a durable metal with anti-oxidation qualities.

We offer **Stainless steel sheet** and **stainless steel plate** with high quality and competitive price. And the material is manufactured by TISCO, BAOSTEEL, POSCO, LISCO and so on. Mainly used in architectural decoration, luxury doors, elevator decoration, metal tank shell, shipbuilding, train interior decoration, and outdoor engineering, advertising nameplates, ceilings and cabinets, aisle panels, screens, tunnel projects, hotels, guesthouses, entertainment venues, kitchens Equipment, light industry, etc.

| | | | |
|---------------------|--|------------------|--------------------------------------|
| Standard: | JIS, AISI, ASTM, GB, DIN, EN, JIS, AISI, ASTM, GB, DIN, EN, etc. | Place of Origin: | Shandong, China |
| Brand Name: | jinshunlai | Model Number: | 201 304 |
| Type: | Welded | Steel Grade: | 300 Series |
| Application: | Industry/Construction | Certification: | ISO, AISI, ASTM, GB, EN, DIN, JIS |
| Welding Line Type: | ERW | Tolerance: | ±1% |
| Processing Service: | Welding | Grade: | SS 304 SS316l |
| Product name: | Stainless Steel Sheet | Key Word: | Schedule 10 Stainless Steel Sheet |
| Surface: | Polished | Price Term: | CIF CFR FOB EX-WORK |
| MOQ: | 1 Ton | Technique: | Hot Rolled , Cold Rolled , Extrusion |
| Payment: | L/C,T/T | Edge: | Mill Edge Slit Edge |
| Port: | Qingdao, China | | |

Specification

| ITEM | DESCRIPTION |
|---------------------|--|
| Product Name | ss coil supplier hot roll coil price 430BA 304BA 201 stainless steel coil |
| Standard | JIS, AISI, ASTM, GB, DIN, EN, etc. |
| Certification | ISO, BV, SGS |
| Material | 200 series 300 series 400 series 600 series |
| Model Number | 304,304L,316L,316Ti,309S,310S,321,321H314,2205,S32205,,2507, S32750,600,631800H,825901,903,904L,N08904,,1.4529,N08926,317L , 317LN347H,348H(253MA,S30815),254SMO,S31254,25-6MOS32760440A, 440B,440CGH3030GH3039(C276,HC-276 Hastelloy)724L,725LN |
| Width | 100mm, 500mm, 600mm, 1000mm, 1250mm, 1500mm, 1800mm, 2000mm, or, as required |
| Thickness | 0.2mm-15mm, or as required |
| Technique | Cold Rolled, hot rolled |
| Surface Treatment | Polishing, Annealing, Pickling, Bright, or as required |
| Surface Finished | BA/2B/NO.1/NO.3/NO.4/8K/HL/2D/1D, or as required |
| Thickness Tolerance | ±0.05mm, or as required |
| Package | Standard export seaworthy package . Water proof paper+Metal pallet+Angle bar protection+Steel belt or as required. |
| Payment | L/C at sight or 30% TT as deposit and the balance paid against copy of B/L, west union, money gram |
| Price Term | CIF, CFR, FOB, EX-WORK |
| Loading Port | Shanghai, Lianyungang, Tianjin, Ningbo,China |
| Place of Origin | Jiangsu, China |
| Delivery Time | Prompt delivery 7-15 days after deposit or as order quantity. |
| MOQ | 1 ton , sample or trial order acceptable |
| Sample | free provided, courier fee by the buyer's side. |
| Advantages | Showing the splendor of your quality, wear-resistant as well, strong corrosion resistance and decorative effect. |
| Application | Stainless coil is commonly used in kitchen equipment, furnace parts, heat exchangers and decorative applications, etc |
| Container Size | 20ft GP: 5898mm(Length)x2352mm(Width)x2393mm(High) 40ft GP: 12032mm(Length)x2352mm(Width)x2393mm(High) 40ft HC: 12032mm(Lengh)x2352mm(Width)x2698mm(High) |



Wuxi Jinnuo copper Co.,Ltd



+86-17763564398



sales01@shuangheyisteel.com



copper-solid.com

32 Chengnan Road, New District, Wuxi City, Jiangsu Province, China