



## In Stock Top Quality Monel 400 Nickel Clad Copper Sheet Metal ASTM B164 B127 B906

Our Product Introduction

### Basic Information

- Place of Origin: china
- Brand Name: jinshunlai
- Certification: ISO, AISI, ASTM, GB, EN, DIN
- Model Number: 0.1mm-900mm
- Minimum Order Quantity: 1kg
- Price: Contact Us
- Packaging Details: Waterproof Paper, Steel Strip Packed and other Standard Export Seaworthy Package, or customized package
- Delivery Time: 5days
- Payment Terms: L/C, T/T , Western Union
- Supply Ability: 90000ton

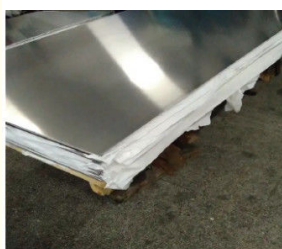


### Product Specification

- Density: 8.9 G/cm<sup>3</sup>
- Elongation: 30-40%
- Formability: Good
- Thermal Conductivity: 50-70 W/mK
- Yield Strength: 200-350 MPa
- Electrical Resistivity: 0.2-0.5  $\mu\Omega\cdot m$
- Magnetic Properties: Non-magnetic
- Material: Copper Nickel Alloy
- Highlight: **Monel nickel clad copper sheet, ASTM nickel clad copper sheet, ASTM monel sheet metal**



### More Images



for more products please visit us on [copper-solid.com](http://copper-solid.com)

## Product Description

Copper-nickel alloy has good mechanical properties at room temperature and high temperature strength, high corrosion resistance, good wear resistance, easy processing, non-magnetic, and is a good structural material for manufacturing traveling wave tube and other electronic tubes.

It can also be used as structural materials for aircraft engines.

Type	Copper Nickel Alloy
Application	Resistance
Grade	Metal
Shape	Strip Coil Foil Plate Sheet
Size	Customized Size

### Copper Nickel Alloy

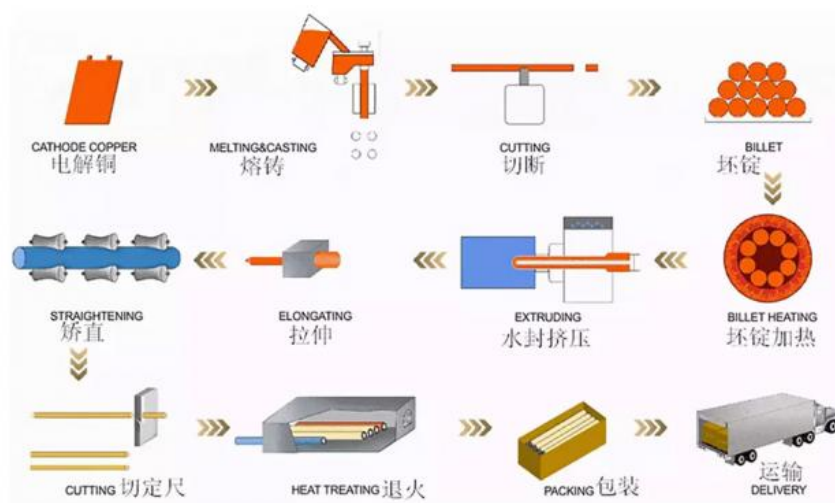
Alloy grade	Resistance temperature coefficient $\times 10^{-5}/K$ (20°C–600°C)	Melting point °C	Density g/cm <sup>3</sup>	Specific heat capacity J/(g·K)	Thermal conductivity W/(m·K)	Linear average expansion coefficient $10^{-6}/K$ (20°C–400°C)	Thermoelectric electromotive force of copper $\mu V/K$ (0°C–100°C)
NC003	<120	1085	8.9	0.38	145	17.5	-8
NC005	<100	1090	8.9	0.38	130	17.5	-12
NC010	<60	1095	8.9	0.38	92	17.5	-18
NC012	<57	1097	8.9	0.38	75	17.5	-22
MC012	<38	1050	8.9	0.39	84	18.0	—
NC015	<50	1100	8.9	0.38	59	17.5	-25
NC020	<38	1115	8.9	0.38	48	17.5	-28
NC025	<25	1135	8.9	0.38	38	17.5	-32
NC030	<16	1150	8.9	0.38	33	17.5	-34
NC035	<10	1170	8.9	0.39	27	17.0	-37
NC040	0	1180	8.9	0.40	25	16.0	-39
NC050	-6<	1280	8.9	0.41	23	15.0	-43

### Copper Nickel Alloy Description

Alloy grade	Resistivity $\mu\Omega\cdot m(20^\circ C)$	Allowable deviation
NC003	0.03	±10%
NC005	0.05	
NC010	0.10	
NC012	0.12	
MC012	0.12	
NC015	0.15	
NC020	0.20	±5%
NC025	0.25	
NC030	0.30	
NC035	0.35	
NC040	0.40	
NC050	0.49	

Alloy grade	Chemical composition(%)							
	Al	C	Cr	Cu	Fe	Mn	Mo	Ni
NC003				Blance				
NC005				Blance				2.0
NC010				Blance				6.0
NC012				Blance				8.0
MC012				Blance		3.0		
NC015				Blance				10.0
NC020				Blance		0.3		14.2
NC025				Blance		0.5		19.0
NC030				Blance		0.5		23.0
NC035				Blance		1.0		30.0
NC040				Blance		1.0		34.0
NC050				Blance		1.0		44.0

### Copper Rod Production Process



We Use High-Quality Raw Materials, And Strictly Control The Production Process To Ensure That All Products Are In Line With International Standards Of Quality Products. We Can Provide Third-Party Quality Inspection Certificates, And We Pay Attention To The Reliability Of Product Quality And The Authenticity Of Test Results.

### Inventory & Packaging





+86-17763564398



sales01@shuangheyisteel.com



copper-solid.com

32 Chengnan Road, New District, Wuxi City, Jiangsu Province, China